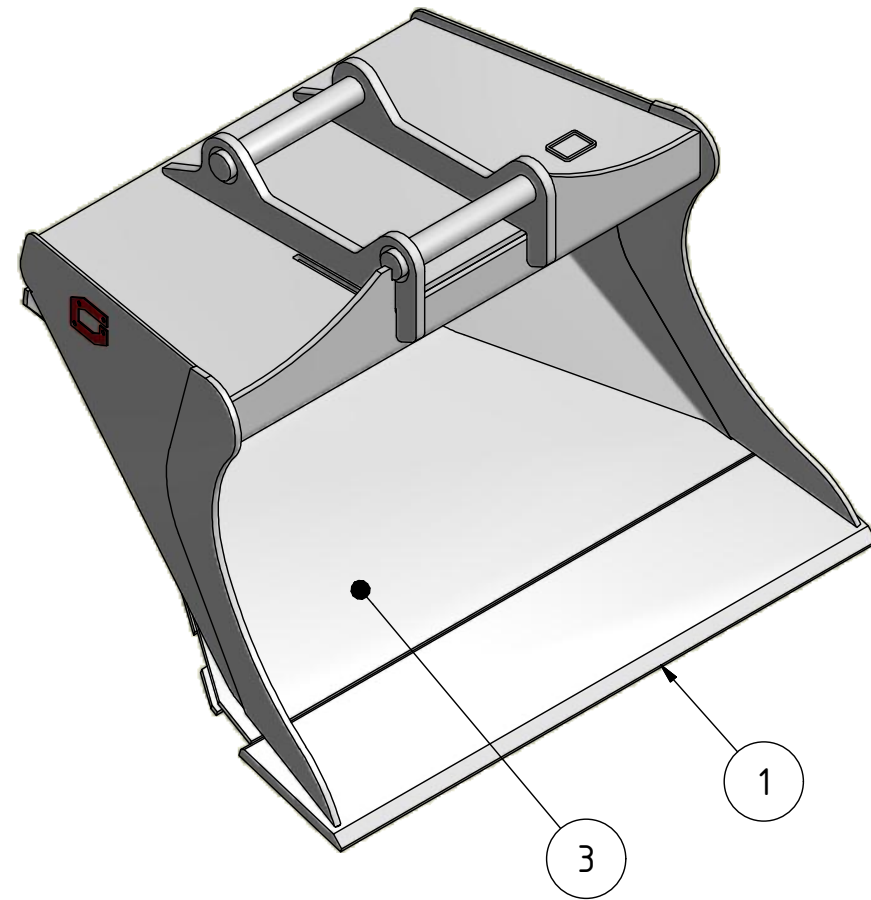
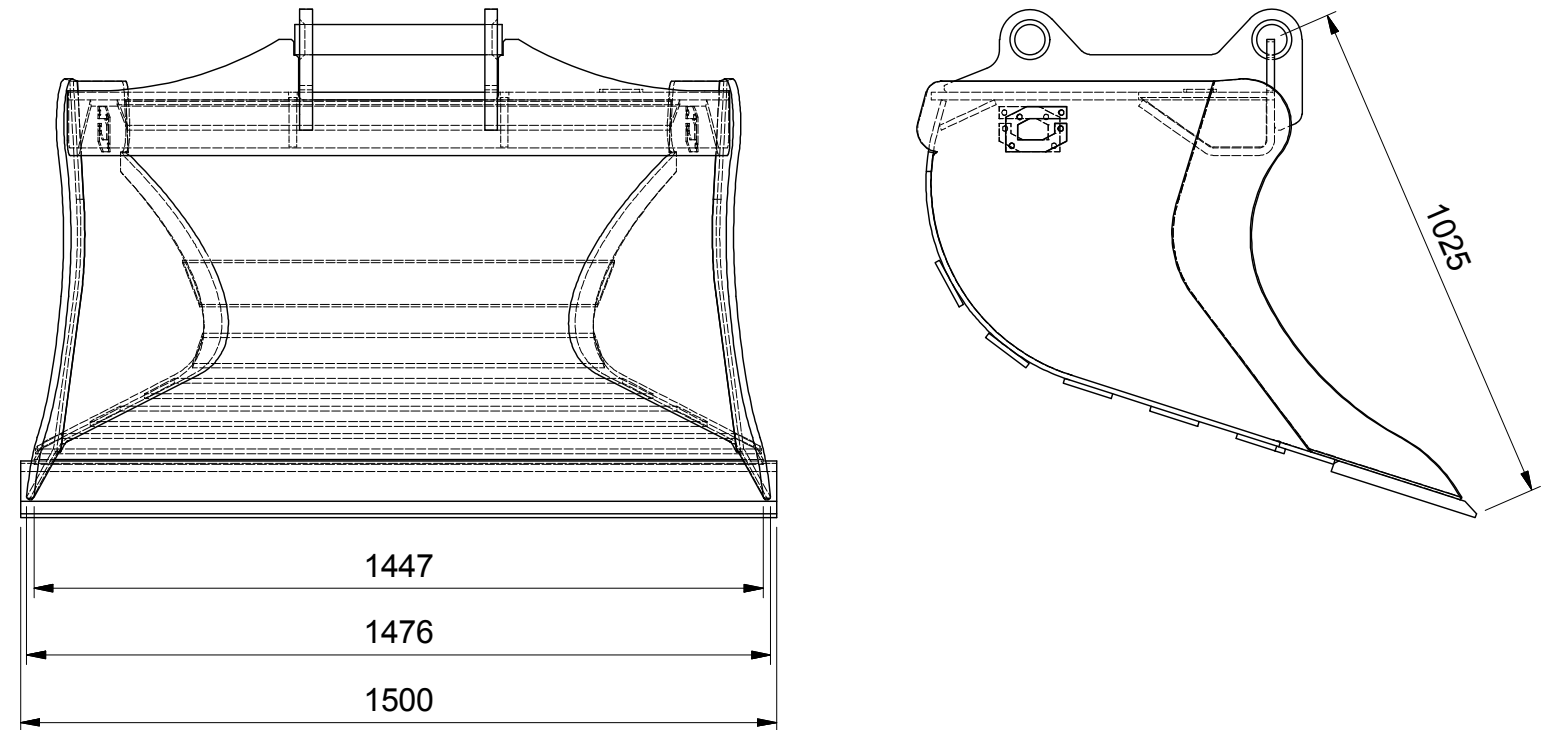


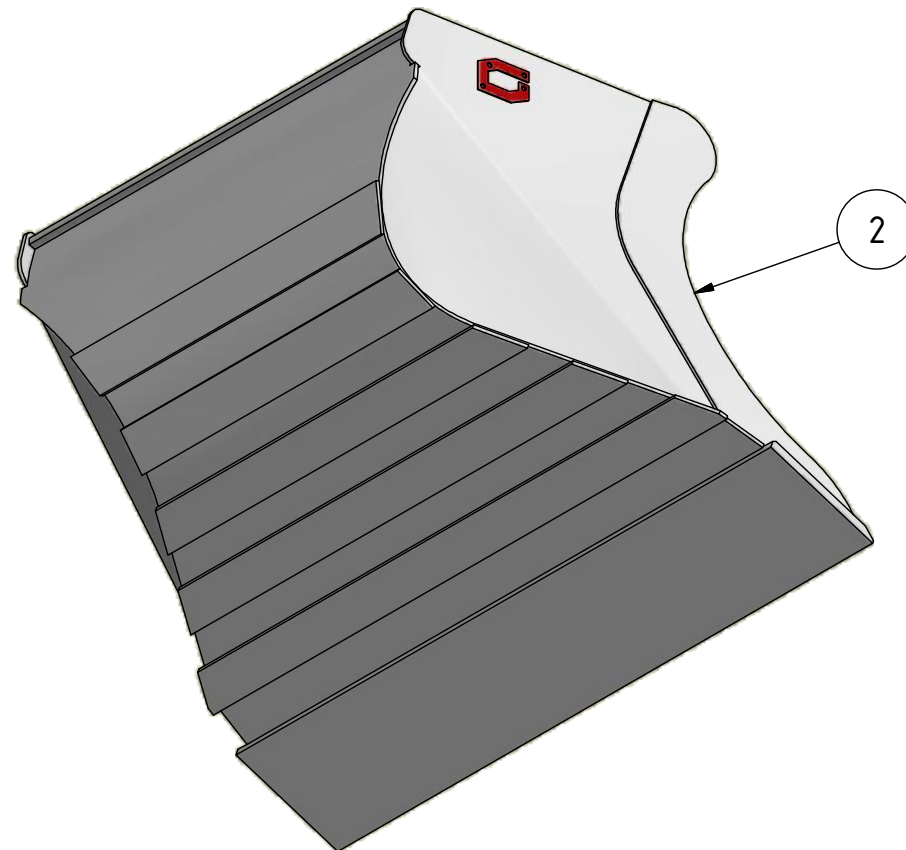
VIEW8 (1 : 15)



VIEW6 (1 : 15)



VIEW9 (1 : 15)



Recommended machine weight: 10-16 T

SPECIFICATION			
POS	TITLE	MATERIAL	DESCRIPTION
1.	FRONT EDGE	HARDOX 500	1500 x 300 x 25 mm
2.	SIDE MEMBER	HARDOX 500	15mm
3.	BOTTOM PLATE	HARDOX 450	10mm
4.			
5.			
6.			

GENERAL TOLERANCES
For non tolerance measurements

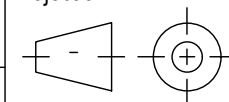
Denne tegning og konstruksjon er vår eiendom, og tillates IKKE kopiert eller benyttet uten vår tillatelse.
Overtredelse vil kunne medføre straff og/eller erstatningsansvar i henhold til gjeldende lov.
This drawing and design is our property, and NOT allowed copied or used without our permission.
Any misuse can lead to prosecution and/or liability for compensation according to law.

MACHINED PARTS:
NS-ISO 2768-1
Grade: m

GJERSTAD HD SLOPE BUCKET 650L S60

Scale:
1:10
A3

Projection:



Date: 20-Apr-15

Draw.: PR

Contr.:

WELDED CONSTRUCTIONS:
NS-EN ISO 13920
1. Linear measurements class: A
2. Angle measurements class: B
3. Straightness etc. class: F



Gjerstad Engineering AS
Brokelandsheia, N-4993 sundebru
www.gjerstad.com

Draw.no.:

GE21730-SALE

Total weight: 518 kg

Revision: